



Usage Manual for the Tigo Alexa skill

Table of Contents

Table of contents.....	2
Alexa Skill Usage	3
Tigo Skill Installation	4
Tigo Skill Commands and Examples.....	5
Command: System Summary.....	5
Command: Current Power	5
Command: Total Energy	6
Command: Peak Energy.....	6
Command: Average Energy.....	7
Command: Stop	7
Command: Help.....	7

Alexa Skill Usage

Interacting with Alexa

Alexa uses skills as applications. Different skills can be downloaded using the Alexa app on a smart phone connected to whatever device Alexa is being used with.

Alexa skills can be invoked using the skill name. Tigo's skill name is simply "Tigo". To invoke a skill the user can either open the skill, or ask it a quick question. The two methods are shown below.

With Session

User : **"Alexa, open Tigo"**

Alexa : <responds with greeting>

User : **"how much power am I producing"**

Alexa : <responds with current power>

(Skill closes)

Without Session

User : **"Alexa, ask Tigo how much power I am producing"**

Alexa : <responds with current power>

(Skill closes)

Cards

Cards are short segments a skill can respond with to supplement any verbal response it gives. When the Alexa app is opened, the first thing you see is a timeline of any cards Alexa has sent you.

Tigo Skill Installation

Prerequisites

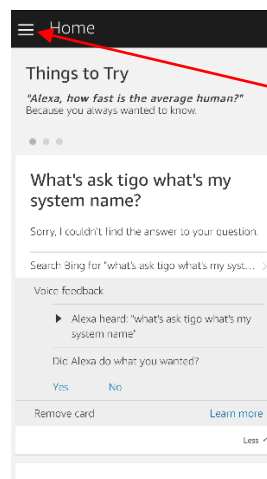
Before you can use Tigo's Alexa skill you need access to a Tigo account that has access to a system that is online. You can check if your system is online by signing into your Tigo account. If your system shows data for its panels, then your system is online.

Skill Installation

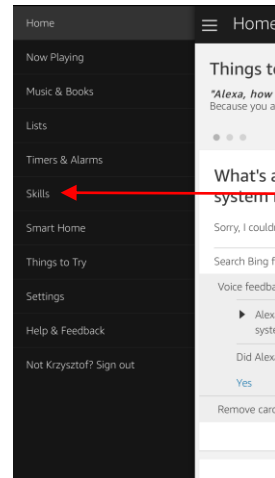
1. To download the Tigo skill, first open the Alexa app on your smartphone.



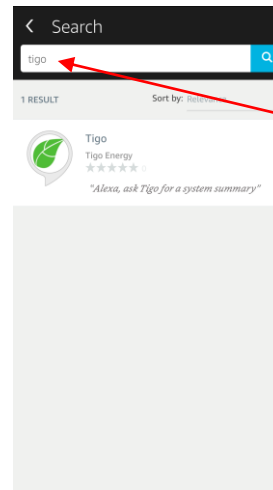
2. Press the menu button in the top left corner of the screen to open the menu.



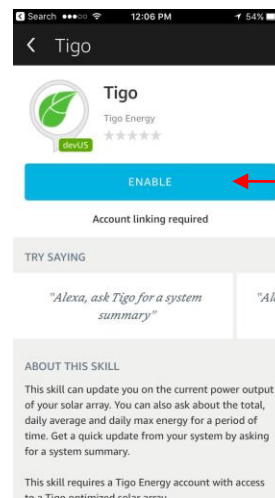
3. In the menu that appears, press the “Skills” option. This is the Alexa skills store. You can also view your current skills by pressing the button in the top right.



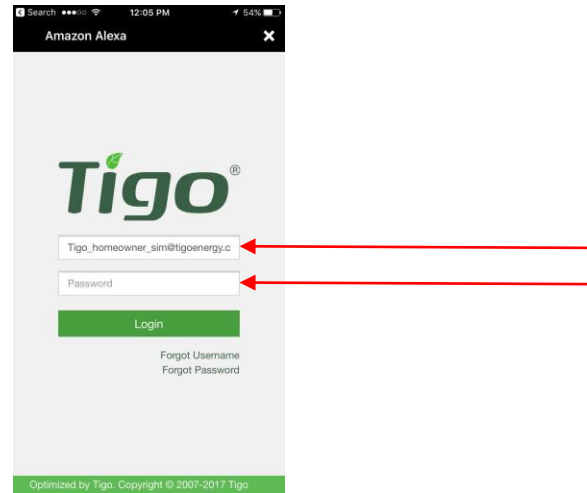
4. While in the skills store, use the search text field at the top to search for “Tigo”. The Tigo skill will appear in the list below. Tap on it to select it.



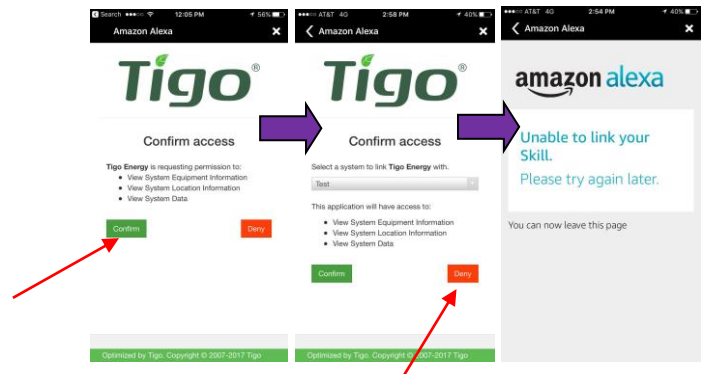
5. There will be an “enable skill” button at the top. Tap on it to begin the account linking process.



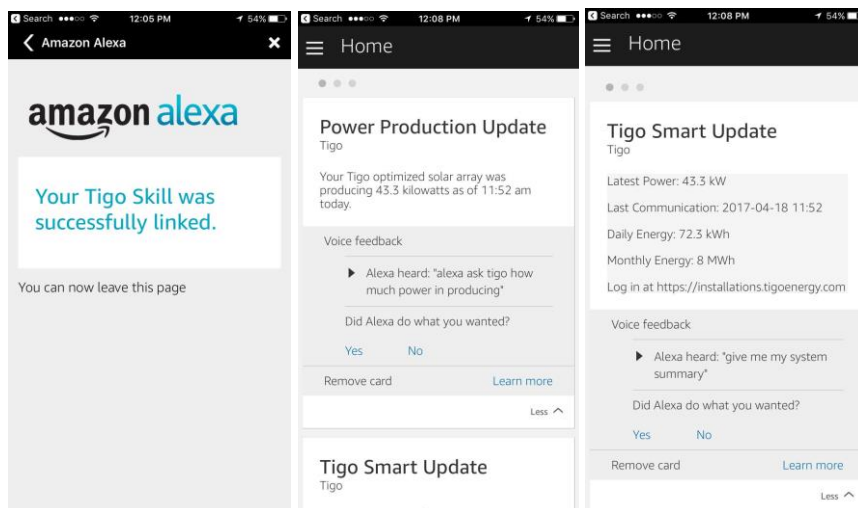
6. You will be sent to the Tigo login page. Input your login credentials and login.



7. Confirm that you are allowing Alexa to access the data for your system. If you have multiple systems, you will need to select one from the drop down. Press "Confirm" to continue with the account linking. Pressing "Deny" will end the account linking process.



8. After you press "Allow" you should see a confirmation that Alexa linked with your Tigo system and access your account.



Tigo Skill Commands and Examples

Command: System Summary

Description

The system summary command will provide a summary of the current state of the user's Tigo optimized system. There are several pieces of information it delivers: When the system turned on in the morning, how much energy the system has generated since it turned on, how much energy the system has generated since the beginning of the month, and the current power output and last uploaded data from the system.

Example Utterances

Command	Response
"Alexa, ask Tigo for a system summary "	<system summary>
"Alexa, ask Tigo for my daily summary "	<system summary>
"Alexa, open Tigo" "Report summary"	<system summary>

Command: Current Power

Description

The current power command will provide the last time a system has uploaded data, as well as the aggregate power production for all the panels on the system.

Example Utterances

Command	Response
"Alexa, ask Tigo how much power I am producing "	<system power output and last communication time>
"Alexa, tell Tigo to give me my current power output "	<system power output and last communication time>
"Alexa, open Tigo" "What is the current production?"	<system power output and last communication time>

Command: Total Energy

Description

The total energy command provides users with energy generated by the system for a period of time. If no time period is requested, then the response will be the lifetime production for the system.

Example Utterances

Command	Response
"Alexa, ask Tigo for my total energy production "	<lifetime energy production>
"Alexa, ask Tigo how much energy I've generated this month "	<production since the start of the month>
"Alexa, open Tigo "What was my energy production in 2016"	<production in 2016>

Command: Peak Energy

Description

The peak energy command provides users with the date of the highest energy production (produced during a day) within a period of time. If no time period is specified Alexa will respond with the day with the highest production for the lifetime of the system.

Example Utterances

Command	Response
"Alexa, ask Tigo for my peak energy production "	<best production since system came online>
"Alexa, ask Tigo for my best day this year "	<best production since the start of the year>
"Alexa, open Tigo "When did I produce the most energy this week?"	<best production in since Monday>

Command: Average Energy

Description

The average energy command provides users with average daily energy production for their system over a period of time. If no time period is specified, Alexa will respond with the average daily energy production since the system came online.

Example Utterances

Command	Response
"Alexa, ask Tigo for my average energy production "	<average production since system came online>
"Alexa, ask Tigo how much I produced on average since January "	<average production since January 1st>
"Alexa, open Tigo "Whats my average production for the week?" "	<average production since Monday>

Command: Stop

Description

The stop command will end the current interaction

Example Utterances

Command	Response
"Alexa, stop "	<No response, skill closes>

Command: Help

Description

The help command provides a brief description of what kinds of things you can ask Tigo.

Example Utterances

Command	Response
"Alexa, ask Tigo for help "	<Short usage information>